

LOCAL EXPERTISE WITH AN INTERNATIONAL FLAIR IN JAPAN'S VIBRANT DINING & SHOPPING HUB

SWISSÔTEL NANKAI, OSAKA

Swissôtel Nankai, Osaka is a deluxe hotel ideally located in the heart of Namba, Osaka's most exciting entertainment, shopping and dining district. The hotel sits above Nankai Railway's Namba Station, offering direct train access to Kansai International Airport and all major tourist attractions – such as Kyoto, Nara and Kobe, which are within easy reach.

The 36-storey tower has 548 luxuriously appointed guest rooms, including 42 Executive rooms and 28 suites with upgraded amenities, a Swiss Executive Club Lounge, a choice of six restaurants and bars, a spa, fitness centre, indoor swimming pool & sauna, 18 banquet/meeting rooms and three wedding chapels.

HOTEL FACILITIES & SERVICES

- 548 guest rooms and suites
- 6 restaurants and bars
- 3 Swiss Executive Club floors and exclusive Club lounge
- Pürovel Spa & Sport
- Car park
- Wheelchair access and facilities
- Grand ballroom, 17 multi-purpose conference rooms for up to 1,400 guests and wedding chapels
- Business centre, Wi-Fi internet access
- Direct train access to airport

GUEST ROOMS

Each of the 548 guestrooms and suites is exquisitely furnished and stylishly functional. All rooms feature state-of-the-art technology and exclusive amenities and services that cater to the needs of the discerning traveller. Non-smoking rooms and a handicapped room are also available.

Swiss Advantage Room

The completely renovated Swiss Advantage Room features comfortable beds, iPod docking station, full connectivity from PC to TV, Nespresso coffee machine and many more added facilities to provide true relaxation and comfort to leisure and business travellers.

Swiss Executive Room

Located on the uppermost floors, Swiss Executive Rooms provide unparalleled services and exclusive privileges including access to Pürovel Spa & Sport, meeting room facilities and Swiss Executive Club lounge where gourmet breakfast, evening snack and drinks are served. All Swiss Executive Rooms are fitted with a large work desk, ergonomic chair, bathroom with a rainfall showerhead, CD / DVD player and Nespresso coffee machine.

Suites and Imperial Suite

Offering the highest standards in style and comfort, All suites feature a spacious living area and a full line of luxury amenities and services, including Jacuzzi-style bathtubs and separate showers. Imperial suite, the largest and most opulent suite at Swissôtel Nankai, Osaka, consists of an elegantly appointed bedroom, an oversized marble bathroom, and an expansive living room, and a service pantry. Guests seeking an authentic Japanese experience will enjoy our Japanese Suites, which are decorated in the traditional style, complete with tatami floor and futon bedding.

RESTAURANT & BARS

The hotel comprises six restaurants and bars for gastronomic pleasure. Tavola36 *Italian Restaurant & Sky Bar* situated on the top floor offers dinners an eclectic experience, complemented with panoramic views of the city.

Located on 10th floor is an array of signature restaurants, Empress Room *Chinese Restaurant*, Minami *Teppanyaki Restaurant*, and Hana-Goyomi *Japanese Restaurant*.

At the hotel lobby, The Lounge offers afternoon tea and evening cocktails with live music while SH'UN *Wine & Dine* serves culinary delights from around the world.

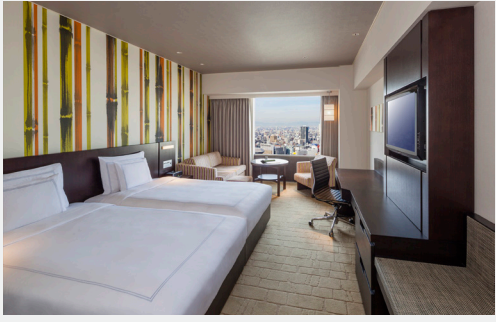
SWISS EXECUTIVE CLUB LOUNGE

Located on 33rd floor, Swiss Executive Club Lounge is exclusively for the use of guests staying in Swiss Executive Rooms and Suite Rooms. Guests can enjoy gourmet breakfast, evening snacks and cocktails, a wide range of refreshing beverages and access to complimentary high-speed internet.

PÜROVEL SPA & SPORT

Pürovel Spa & Sport at Swissôtel Nankai, Osaka offers a wide variety of massages and high-quality treatments designed to relax, refresh and re-energize our guests. Facilities include five private treatment rooms, fully equipped gym, exercise studio, in-door swimming pool, Jacuzzi, sauna and traditional Japanese baths.





MEETING, EVENTS & CONFERENCES

Our conference and business facilities are located on the 7th to 9th and 35th floors. With one grand ballroom and 17 other multi-function rooms to cater to a capacity of 10 to 1,400 persons, our banquet facilities are designed to meet a full spectrum of conference requirements.

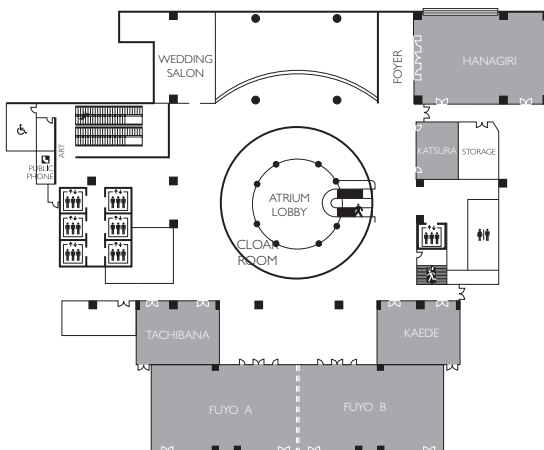
They are particularly suitable for social & cultural events, meetings, conferences, seminars, exhibitions, product presentations and weddings.

Our renowned Swiss Meeting Specialists ensure the seamless and successful running of the events.

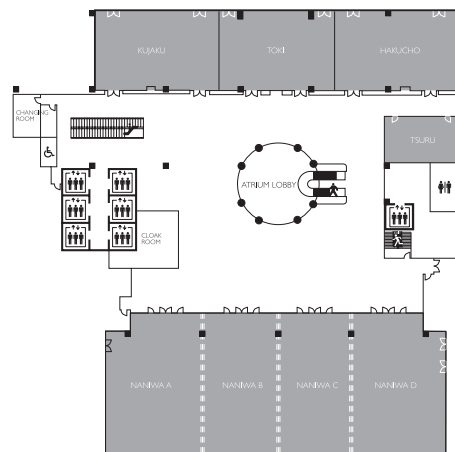
CAPACITY CHART

| MEETING ROOMS | AREA FT ² | AREA M ² | L | W | H | THEATRE STYLE | CLASS ROOM | COCKTAIL RECEPTION | BANQUET |
|---------------------|----------------------|---------------------|------|------|-----|---------------|------------|--------------------|---------|
| LEVEL 7 | | | | | | | | | |
| Fuyo A + B | 4628.6 | 430 | 11.2 | 37.3 | 3.5 | 520 | 270 | 300 | 200 |
| Fuyo A | 2314.3 | 215 | 11.2 | 18.3 | 3.5 | 220 | 120 | 120 | 80 |
| Fuyo B | 2314.3 | 215 | 11.2 | 18.3 | 3.5 | 220 | 120 | 120 | 80 |
| Hanagiri | 2099 | 195 | 15.8 | 11.8 | 3.4 | 180 | 100 | 120 | 80 |
| Kaede | 968.7 | 90 | 8.1 | 10.8 | 3.3 | 80 | 36 | 50 | 40 |
| Tachibana | 968.7 | 90 | 8.1 | 10.8 | 3.3 | 80 | 36 | 50 | 40 |
| Katsura | 441.3 | 41 | 5.3 | 7.4 | 2.8 | - | - | - | 10 |
| LEVEL 8 | | | | | | | | | |
| Naniwa A+ B + C + D | 12055.6 | 1120 | 23.3 | 48.0 | 6.0 | 1400 | 800 | 1200 | 600 |
| Naniwa A+ B (C + D) | 6027.8 | 560 | 23.3 | 23.6 | 6.0 | 600 | 350 | 400 | 270 |
| Naniwa B + C | 5354.8 | 498 | 23.3 | 20.2 | 6.0 | 500 | 300 | 300 | 240 |
| Naniwa A | 3344.1 | 311 | 23.3 | 13.5 | 6.0 | 300 | 180 | 200 | 140 |
| Naniwa B | 2677.4 | 249 | 23.3 | 10.1 | 6.0 | 240 | 150 | 150 | 120 |
| Naniwa C | 2677.4 | 249 | 23.3 | 10.1 | 6.0 | 240 | 150 | 150 | 120 |
| Naniwa D | 3341.1 | 311 | 23.3 | 13.5 | 6.0 | 300 | 180 | 200 | 140 |
| Hakucho | 2088.2 | 194 | 10.9 | 17.4 | 3.4 | 160 | 120 | 120 | 80 |
| Toki | 1948.3 | 181 | 10.9 | 16.2 | 3.3 | 140 | 100 | 100 | 70 |
| Kujaku | 2088.2 | 194 | 10.9 | 17.4 | 3.4 | 160 | 120 | 120 | 80 |
| Tsuru | 742.7 | 69 | 6.4 | 10.4 | 2.6 | 60 | 36 | 40 | 30 |

LEVEL 7



LEVEL 8



LEGEND

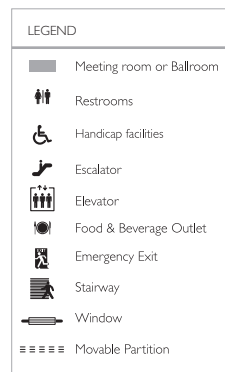
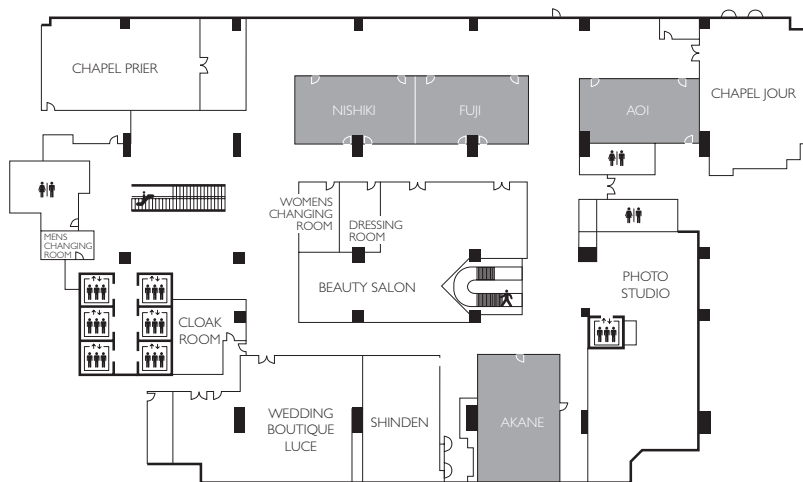
- Meeting room or Ballroom
- Restrooms
- Handicap facilities
- Escalator
- Elevator
- Food & Beverage Outlet
- Emergency Exit
- Stairway
- Window
- Movable Partition



CAPACITY CHART

| MEETING ROOMS | AREA FT ² | AREA M ² | L | W | H | THEATRE STYLE | CLASS ROOM | COCKTAIL RECEPTION | BANQUET |
|-----------------|----------------------|---------------------|------|------|-----|---------------|------------|--------------------|---------|
| LEVEL 9 | | | | | | | | | |
| Akane | 742.7 | 69 | 7.2 | 9.5 | 2.4 | 40 | 30 | - | - |
| Aoi | 710.4 | 66 | 6.2 | 10.4 | 2.9 | 56 | 30 | 40 | 30 |
| Fuji | 710.4 | 66 | 6.2 | 10.4 | 2.9 | 56 | 30 | 40 | 30 |
| Nishiki | 710.4 | 66 | 6.2 | 10.4 | 2.9 | 56 | 30 | 40 | 30 |
| LEVEL 35 | | | | | | | | | |
| Ciel Bleu | 2228.1 | 207 | 13.3 | 14.9 | 3.3 | - | - | 100 | 80 |
| Belle Vue | 1087.1 | 101 | 10.3 | 8.6 | 3.3 | - | - | 50 | 40 |
| Crown Room | 785.7 | 73 | 6.8 | 10.4 | 3.3 | - | - | - | 8 |
| Diamond Room | 1399.3 | 130 | 6.8 | 17.7 | 3.3 | - | - | - | 18 |

LEVEL 9



LEVEL 35

