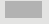








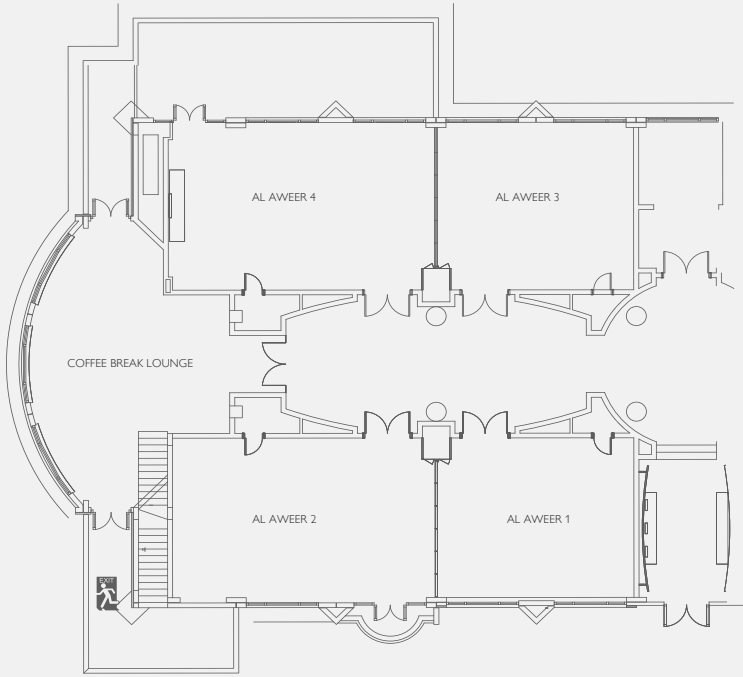


CAPACITY CHART

| MEETING ROOMS | AREA M ² | L | W | H | DINING | THEATRE | CLASS ROOM | BOARD ROOM | U-SHAPE | RECEPTION | CABARET STYLE |
|--------------------------|---------------------|------|------|-----|--------|---------|------------|------------|---------|-----------|---------------|
| Al Yassat Ballroom A | 73 | 3.7 | 19.3 | 5.5 | 40 | 50 | 35 | 14 | 18 | 50 | 24 |
| Al Yassat Ballroom B | 142 | 7.3 | 19.3 | 5.5 | 90 | 100 | 65 | 25 | 30 | 150 | 66 |
| Al Yassat Ballroom C | 314 | 16.5 | 19.3 | 5.5 | 160 | 300 | 154 | 42 | 55 | 300 | 96 |
| Al Yassat Ballroom D | 142 | 7.3 | 19.3 | 5.5 | 90 | 100 | 65 | 25 | 30 | 150 | 66 |
| Al Yassat Ballroom E | 73 | 3.7 | 19.3 | 5.5 | 40 | 50 | 30 | 14 | 18 | 50 | 24 |
| Al Yassat Grand Ballroom | 744 | 40.1 | 19 | 5.5 | 500 | 700 | 350 | 116 | 114 | 1000 | 240 |
| Al Aweer 1 | 56 | 8.2 | 6.8 | 3 | 40 | 40 | 24 | 14 | 15 | 45 | 24 |
| Al Aweer 2 | 70 | 10.3 | 6.8 | 3 | 50 | 60 | 30 | 22 | 24 | 60 | 30 |
| Al Aweer 3 | 56 | 8.2 | 6.8 | 3 | 40 | 40 | 24 | 14 | 15 | 45 | 24 |
| Al Aweer 4 | 70 | 10.3 | 6.8 | 3 | 50 | 60 | 30 | 22 | 24 | 60 | 30 |
| Al Aweer 1&2 | 126 | 18.4 | 6.8 | 3 | 90 | 100 | 60 | 36 | 46 | 120 | 54 |
| Al Aweer 3&4 | 126 | 18.4 | 6.8 | 3 | 90 | 100 | 60 | 36 | 46 | 120 | 54 |
| Business Centre 1 | FIXED TABLE | | | | | | | 10 | | | |
| Business Centre 2 | FIXED TABLE | | | | | | | 6 | | | |

LEGEND

-  Meeting Room or Ballroom
-  Restrooms
-  Disabled Restrooms
-  Prayer Room
-  Food & Beverage Outlet
-  Emergency Exit
-  Stairway
-  Window
-  Moveable Partition



MEETING ROOMS LOBBY LEVEL

AL YASAT BALLROOM GROUND LEVEL

