

SOCHI

CONTEMPORARY DESIGN IN A GARDEN SETTING CREATES A RELAXING BLACK SEA RETREAT

Swissôtel Resort Sochi Kamelia

89, Kurortny Prospekt, Sochi 354002, Russia

Tel: +7 862 296 8801, +7 862 296 8802

sochi@swissotel.com www.swissotel.com/sochi-kamelia

swissôtel **RESORT**
SOCHI KAMELIA

LOCATION

BACK TO NATURE IN THE HEART OF SOCHI

If it's vistas you are after then head to the Swissôtel Resort Sochi Kamelia. Nestled in a natural park overlooking the Black Sea, this retreat takes inspiration from contemporary Swiss design while paying homage to the exceptional scenery. Here you are only 30 minutes away from Sochi International Airport and in the heart of Sochi city centre, but you'll feel miles away from bustling city life. Krasnaya Polyana, the renowned ski area is close by and has snow until May - which means you can relax in the warm sun on our hotel beach one day and go skiing the next. We offer both a sanctuary and starting point if you are looking to soak up the rich cultural surroundings, but also want a comfortable and invigorating place to relax at the end of the day.



GUEST ROOMS

ROOMS WITH AN IMPRESSIVE VIEW

Overlooking the Black Sea in a natural park in Sochi, all of our 203 guest rooms blend elegant simplicity with contemporary design. Most rooms have private balconies with magnificent sea views complemented by lush fabrics, wooden floors and stone bathrooms. The stylishly designed suites include 12 suites and 8 duplex suites. The suites boast floor to ceiling windows, marble bathrooms and spacious balconies and terraces.

RESTAURANTS & BARS

ONE DELICIOUS BITE AFTER ANOTHER

We infuse our Swiss roots into whatever we do, and our restaurants and bars are no exception. Experience informal contemporary settings for breakfast, lunch and dinner - where you can meet, celebrate or simply pass the time. Enjoy a blend of traditional Swiss and international cuisine at Kamelia Café, Rivage Restaurant and the Lobby Lounge, where dishes are prepared with the finest local ingredients.



SPA & SPORT

STAY FIT AND FRESH

With a range of treatments designed to relax every muscle in the body, our spa and sport provides a solution to healthy living for everyone who wishes to reach or maintain a naturally vital lifestyle. This philosophy is derived from the origin of wellbeing and the use of nature's resources, such as stone, wood, water, flora. If you are looking to stay fit during your travels then head to our outdoor heated pool, fully-equipped gym, treatment rooms and saunas.



CONFERENCES, MEETINGS & EVENTS

A BEAUTIFUL SPACE TO DO BUSINESS

The setting alone makes for an impressive launch or meeting. Add to that state-of-the-art conference facilities and dedicated meeting specialists and you will find everything you need to ensure a successful event. Our 292 square metre ballroom can accommodate up to 200 guests. It is light, airy and a truly beautiful space for weddings, celebrations and conferences. All of the meeting rooms are fully air-conditioned. Whether for an international conference or an exclusive and more intimate meeting, our facilities, service and specialist team are guaranteed to leave a lasting impression.



FACILITIES & SERVICES

SWISSÔTEL RESORT SOCHI KAMELIA HIGHLIGHTS

- Centrally located 5-star resort
- Located on a sandy beach
- 203 beautiful and contemporary rooms and suites
- 30 minute drive from Sochi International airport
- 15 minute drive from the Sochi train station
- Airport transfers
- 2 in-house restaurants, lobby bar, seasonal pool bar and beach bar
- Professional conference, meeting and event facilities spanning a total of 460 square meters
- Free wireless internet
- Spa and sport centre, outdoor heated pool
- 24-hour in room dining
- 24-hour concierge service
- Children's playground and pool
- Car park with 45 parking lots



CAPACITY CHART

MEETING ROOMS	AREA M ²	AREA FT ²	H M ²	H FT ²	THEATRE	CLASS-ROOM	BANQUET	BOARD-ROOM	U-SHAPE	COCKTAIL
---------------	---------------------	----------------------	------------------	-------------------	---------	------------	---------	------------	---------	----------

FLOOR 2

Zurich	77	829	3.8	12.4	30	-	-	15	-	-
Lucerne	44	469	2.6	8.5	25	-	-	14	-	-
Locarno	23.5	235.5	2.6	8.5	-	-	-	10	-	-
Ascona	23.5	235.5	2.6	8.5	-	-	-	10	-	-

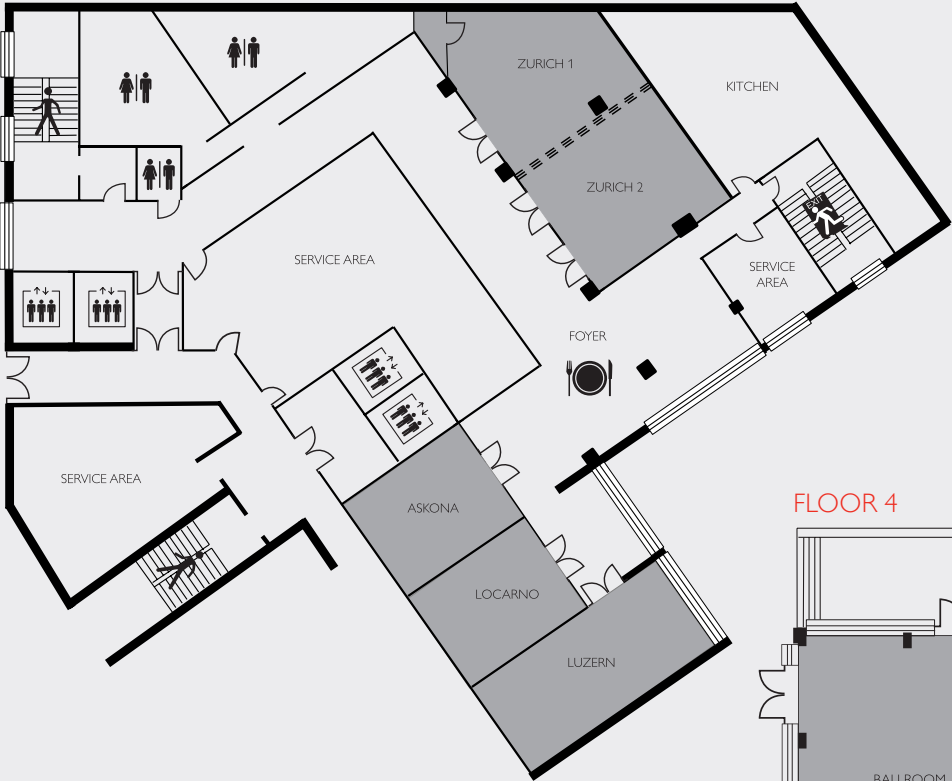
FLOOR 4

Ballroom I	146	1571.5	5	16.4	100	40	50	30	25	115
Ballroom II	146	1571.5	5	16.4	100	40	50	30	25	115
Ballroom I + II	292	3143	5	16.4	200	80	100	60	50	230

LEGEND

- Meeting Room or Ballroom
- Restrooms
- Escalator
- Elevator
- Food & Beverage Outlet
- Emergency Exit
- Stairway
- Window
- Moveable Partition

FLOOR 2



FLOOR 4

